



Your Life Journey

by

Rashmi Aiyappa, World Renowned Spiritual Scientist

on Sunday, 16 October 2011, 2-6 p.m.

Corus Hotel, Jalan Ampang, Kuala Lumpur, Malaysia

Price: RM100 per person, group discount 10% for 5 persons and above

For registration, call +603-80614735, +6012-3057539, + 6017-3643624, + 6019-3368488

or email nages@aashwasan.com

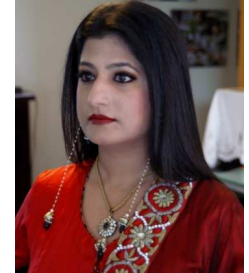
2:00-2:30 p.m.	Registration
2:30-2:45 p.m.	Introduction
2:45-5:00 p.m.	Talk by Rashmi Aiyappa
5:00-5:45 p.m.	Q & A
5:45-6:00 p.m.	Closing

- I have everything I need. Yet, why do I feel empty?
- My life has been difficult all the while. It was difficult growing up, and now it is still difficult with my children. When will this stop? Is it fate? Can I change it?
- I never seem to have time for myself? My life is just so busy with work and my family. I don't like what's happening but what can I do?
- My business seems to be doing well one moment and then crashes the next. The cycle seems to be repeating. What am I doing wrong? What do I do?
- I have cancer. What did I do to deserve this?
- My life is such a routine. Is this what life is about? Is there more?
- Why am I feeling depressed all the time? How can I get out of this?
- I have done everything to stay healthy – I eat well, try to sleep well and exercise. So why am I always sick?
- I feel people are taking advantage of me all the time. Why do they do that?
- Why is it nothing seems to be going according to plan? I worked really hard!
- I was very successful once. Now I have lost everything. What do I do?

We try to find answers. When there are no answers, we resign it to fate or karma. Then we feel helpless....

Is that truly how life is supposed to be?

Come join us and find out from world renowned spiritual scientist, Rashmi Aiyappa.



Rashmi was born with abilities that she has used to restore hope, happiness and love in over 5000 lives globally. In doing so, Rashmi has also treated and completely reversed conditions such as degenerative disorders, genetic disorders, developmental disorders, psychiatric and psychological conditions, addiction and cancer, to name a few.

Rashmi's purpose is to restore equilibrium in the universe, hence preventing further harm to mankind. Her work has resulted in her incorporating Aashwasan, a platform for her channels, i.e. her healers, to unleash her full potential to all of mankind.

She is a universal phenomenon who breathes life into each and every one of us.